



[IRIZE STANDING DESK, 24" X 48"](#)

SKU: I2448

Changing posture throughout the day can improve energy levels and boost productivity. iRize meet BIFMA Ergonomic guidelines and provide you with ultra quiet, smooth and precise lift that accommodate people in any height range. Fully integrates with Kai Line Laminate products.

Categories: [Desks](#), [Height Adjustable Desks](#)

Tags: [iRize](#)

GALLERY IMAGES



iRize Standing Desk Matte White Top White Base Front



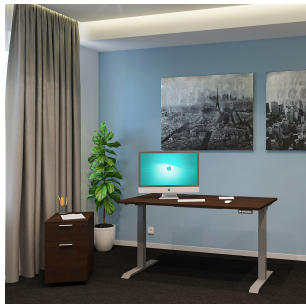
iRize Standing Desk Black Top Black Silver Base Side



iRize Seven Button Remote



iRize Standing Desk Mahogany Top Silver Base Room Scene



iRize Standing Desk Walnut Top Silver Base Room Scene



iRize Standing Desk Samoa Gray Top White Base Room Scene



iRize Standing Desk Espresso Top Silver Base Room Scene



PRODUCT DESCRIPTION

The iRize Height Adjustable Collection effortlessly adjusts to the workflow of any office space. What makes iRize standing desks great is how quiet they are and how easy it is to get the exact elevation needed to reduce wrist strain and increase productivity levels with timed reminders that help keep you moving throughout your day. iRize can fit into your workstation setup or fully integrate it with Kai Line laminate products to create a tailored experience. All iRize standing desks adjust to heights that meet BIFMA Ergonomic guidelines and are available now at a great value.

PRODUCT FEATURES

- Height Adjustable
- Commercial quality
- Three programmable height presets
- Timed reminders
- Anti-pinch and anti-collision sensor
- Smooth and precise lift
- Ultra-quiet
- Dual-motor system
- 2 Stage column design
- Fast, stable adjustments
- Sustainably sourced wood
- Fluted edges
- 3mm edge banding for a better look and feel
- Top imported from Europe
- Base imported from Vietnam
- Weight Capacity: 220lbs

PRODUCT DIMENSIONS

Depth	24"
Width	48"
Height	27.2" - 46.5"
Weight	82.96 lbs

COMPONENTS

Top	Kai Fluted Worksurface, 24" x 48"
Base	iRize Electric Height Adjustable Base



PRODUCT INFORMATION

Speed	32mm/s
Power Type	100V - 240V
Decibel	<50dB
Stroke	19.3"
Height Range	27.2" - 46.5"
Recommended Tabletop (WIDTH)	47.2" - 78.7"
Recommended Tabletop (DEPTH)	23.6" - 31.5"
Top Material	Laminate
Base Material	Steel
Certifications	ANSI / BIFMA, UL Greenguard Gold, TSCA Title IV, CARB 2
Warranty	5 years on mechanical, 2 years on electrical
Assembly Information	Assembly required. All hardware included.
Product Codes	IB2448.ESP.F.NG IB2448.MAHO.F.NG IB2448.WHT.F.NG IB2448.SG.F.NG IB2448.WN.F.NG IS2448.ESP.F.NG IS2448.MAHO.F.NG IS2448.WHT.F.NG IS2448.SG.F.NG IS2448.WN.F.NG IW2448.ESP.F.NG IW2448.MAHO.F.NG IW2448.WHT.F.NG IW2448.SG.F.NG IW2448.WN.F.NG

NOTES
