



## **KAI CREDENZA STORAGE WITH DOUBLE STORAGE CABINETS**

**SKU:** C2471P-6

Credenza storage with two lockable storage cabinets. Spans nearly 6 feet wide and can hold up to 150 lbs on top.

**Categories:** [Credenzas](#), [Storage](#)

**Tags:** [Kai](#)

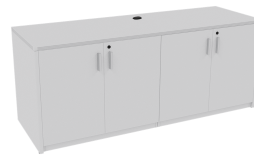
### **GALLERY IMAGES**



Walnut Credenza with Double Storage Cabinets



Samoa Gray Credenza Double Storage Cabinets



Matte White Credenza with Double Storage Cabinets



Mahogany Credenza with Double Storage Cabinets



Espresso Credenza with Double Storage Cabinets



## PRODUCT DESCRIPTION

Laminate credenza storage with two lockable storage cabinets. Each storage cabinet has one adjustable shelf inside it. They feature keyhole-shaped aluminum pulls and custom keying options are available. A single grommet in the top provides power cord maintenance and protection. Available in five finish options.

## PRODUCT FEATURES

- Storage cabinets arrive fully assembled
- Lockable storage
- Adjustable shelf in each storage cabinet
- 2" kickplate
- Heavy-duty construction
- Overengineered with 15+ connection points
- Easy assembly
- Commercial quality
- Sustainably sourced wood
- Imported from Europe
- Shelf Weight Capacity: 75 lbs
- Top Weight Capacity: 150 lbs

## PRODUCT DIMENSIONS

Depth	23.75"
Width	71"
Height	29"
Weight	291 lbs

## COMPONENTS

Credenza Shell	<a href="#">Kai Credenza, 24" x 71"</a>
Storage Cabinet	<a href="#">Kai 2 Door Storage Cabinet, 36"</a>
Storage Cabinet	<a href="#">Kai 2 Door Storage Cabinet, 36"</a>

## PRODUCT INFORMATION

Number of Grommets	1
Number of Shelves	2
Adjustable Leveling Glides	1"
Edge Type	Fluted
Material	Laminate



[Kai Credenza Storage with Double Storage Cabinets](#)

<https://i5industries.com/product/kai-line-credenza-storage-with-double-storage-cabinets/>



- Certifications
- Warranty
- Assembly Information
- Product Codes

ANSI/BIFMA, UL Greenguard Gold, TSCA Title IV, CARB 2  
10 years  
Assembly required.  
C2471P-6.ESP | C2471P-6.MAHO | C2471P-6.WHT |  
C2471P-6.SG | C2471P-6.WN

NOTES

---

---

---

---

---