



KAI DESK SHELL, 30" X 48"

SKU: D3048

Kai Laminate Desk Shell, 30" x 48" with two black grommets and fluted edges. Built with a heavy-duty cam and dowel system.

Categories: [Components](#), [Desk + Credenza Shells](#), [Desking](#), [Rectangular Desks](#)

Tags: [Kai](#)

GALLERY IMAGES



i5 Industries Kai Rectangular Desk Shell Front – Samoa Gray – D3048, D3060, D3066, D3071, D3671



i5 Industries Kai Rectangular Desk Shell – Mahogany – D3048, D3060, D3066, D3071, D3671



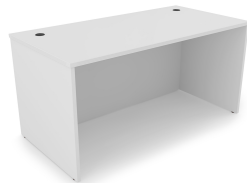
i5 Industries Kai Rectangular Desk Shell Front – Mahogany – D3048, D3060, D3066, D3071, D3671



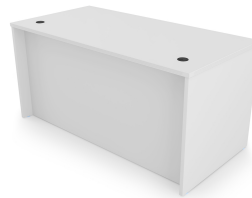
i5 Industries Kai Rectangular Desk Shell – Espresso – D3048, D3060, D3066, D3071, D3671



i5 Industries Kai Rectangular Desk Shell Front – Espresso – D3048, D3060, D3066, D3071, D3671



i5 Industries Kai Rectangular Desk Shell – Matte White – D3048, D3060, D3066, D3071, D3671



i5 Industries Kai Rectangular Desk Shell Front – Matte White – D3048, D3060, D3066, D3071, D3671



i5 Industries Kai Rectangular Desk Shell – Walnut – D3048, D3060, D3066, D3071, D3671



PRODUCT FEATURES

- Fluted top edges
- Black grommets are standard on all finishes
- 3mm edge banding
- Heavy duty construction
- Adjustable glides, up to 1"
- Commercial quality
- Sustainably sourced wood
- Imported from Europe
- Matching components available
- 10 year manufacturer's warranty
- Typically available for quick ship
- Weight Capacity: 150 lbs

PRODUCT DIMENSIONS

Depth	30.25"
Width	48.25"
Height	29"
Weight	95 lbs

PRODUCT INFORMATION

Material	Laminate
Certifications	ANSI/BIFMA, UL Greenguard Gold, TSCA Title IV, CARB 2
Warranty	10 years
Assembly Information	Assembly required.
Product Codes	D3048.ESP D3048.MAHO D3048.WHT D3048.SG D3048.WN

NOTES



[Kai Desk Shell, 30" x 48"](https://i5industries.com/product/kai-line-desk-shell-30-x-48/)
<https://i5industries.com/product/kai-line-desk-shell-30-x-48/>

