



## **KAI DESK SHELL, 30" X 60"**

**SKU:** D3060

Kai Laminate Desk Shell, 30" x 60" with two black grommets and fluted edges. Built with a heavy-duty cam and dowel system.

**Categories:** [Components](#), [Desk + Credenza Shells](#), [Desking](#), [Rectangular Desks](#)

**Tags:** [Kai](#)

## **GALLERY IMAGES**



i5 Industries Kai Rectangular Desk Shell Front – Samoa Gray – D3048, D3060, D3066, D3071, D3671



i5 Industries Kai Rectangular Desk Shell – Mahogany – D3048, D3060, D3066, D3071, D3671



i5 Industries Kai Rectangular Desk Shell Front – Mahogany – D3048, D3060, D3066, D3071, D3671



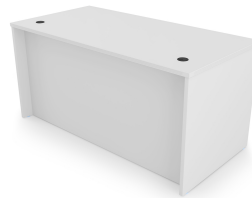
i5 Industries Kai Rectangular Desk Shell – Espresso – D3048, D3060, D3066, D3071, D3671



i5 Industries Kai Rectangular Desk Shell Front – Espresso – D3048, D3060, D3066, D3071, D3671



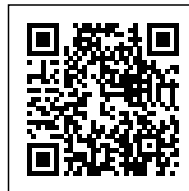
i5 Industries Kai Rectangular Desk Shell – Matte White – D3048, D3060, D3066, D3071, D3671



i5 Industries Kai Rectangular Desk Shell Front – Matte White – D3048, D3060, D3066, D3071, D3671



i5 Industries Kai Rectangular Desk Shell – Walnut – D3048, D3060, D3066, D3071, D3671



## PRODUCT FEATURES

- Fluted edge laminate top
- 2 black grommets
- 3mm edge banding
- Commercial quality
- Sustainably sourced wood
- Imported from Europe
- Weight Capacity: 150 lbs

## PRODUCT DIMENSIONS

|        |         |
|--------|---------|
| Depth  | 30.25"  |
| Width  | 60.25"  |
| Height | 29"     |
| Weight | 108 lbs |

## PRODUCT INFORMATION

|                            |  |
|----------------------------|--|
| Number of Grommets         | 2  |
| Adjustable Leveling Glides | 1"   |
| Edge Type                  | Fluted   |
| Wood Grain Direction       | Horizontal   |
| Material                   | Laminate   |
| Certifications             | ANSI/BIFMA, UL Greenguard Gold, TSCA Title IV, CARB 2    |
| Warranty                   | 10 years   |
| Assembly Information       | Assembly required.                                       |
| Product Codes              | D3060.ESP   D3060.MAHO   D3060.WHT   D3060.SG   D3060.WN |

## NOTES

