



## **KAI L-SHAPED DESK WITH DOUBLE SUSPENDED PEDESTALS, 66" X 72"**

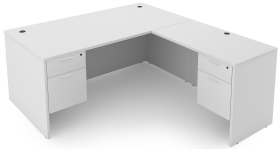
**SKU:** D6672P-1

Laminate corner desk with straight front and four drawers. This desk is reversible and can be used as a left-handed or right-handed desk. This is the 66" depth x 72" width version.

**Categories:** [Desking](#), [L-Shaped Desks](#)

**Tags:** [Kai](#)

## **GALLERY IMAGES**



i5 Industries Kai L-Shaped Desk Double Suspended Ped – Matte White – D6672P-1, D6678P-3, D7172P-3, D7178P-5, D7178P-6, D7184P-3

i5 Industries Kai L-Shaped Desk Double Suspended Ped – Mahogany – D6672P-1, D6678P-3, D7172P-3, D7178P-5, D7178P-6, D7184P-3

i5 Industries Kai L-Shaped Desk Double Suspended Ped – Espresso – D6672P-1, D6678P-3, D7172P-3, D7178P-5, D7178P-6, D7184P-3

i5 Industries Kai L-Shaped Desk Double Suspended Ped – Walnut – D6672P-1, D6678P-3, D7172P-3, D7178P-5, D7178P-6, D7184P-3

## **PRODUCT FEATURES**

- Fluted top edges
- Reversible - adjusts for left-handed or right-handed configurations
- Black grommets are standard on all finishes
- Silver Nickel keyhole shaped handles are standard on all finishes. Optional black handles available for additional charge.
- Soft close drawers on select finishes
- 3mm edge banding



[Kai L-Shaped Desk with Double Suspended Pedestals, 66" x 72"](https://i5industries.com/product/kai-line-l-shaped-desk-with-double-suspended-pedestals-66-x-72/)

<https://i5industries.com/product/kai-line-l-shaped-desk-with-double-suspended-pedestals-66-x-72/>



- Pedestals arrive assembled
- Storage is secured with lock and key
- Heavy duty construction
- Adjustable glides, up to 1"
- Commercial quality
- Sustainably sourced wood
- Imported from Europe
- Matching components available
- 10 year manufacturer's warranty
- Typically available for quick ship
- Weight Capacity of Desk: 150 lbs
- Weight Capacity of Drawers: 75 lbs

## PRODUCT DIMENSIONS

Overall Dimensions (Length x Width x Height)	66.25" L x 72.25" W x 29" H
Main Desk Dimensions	30.25" D x 66.25" W x 29" H
Return Desk Dimensions	23.75" D x 42" W x 29" H
Overall Weight	267 lbs

## PRODUCT INFORMATION

Material	Laminate
Certifications	ANSI/BIFMA, UL Greenguard Gold, TSCA Title IV, CARB 2
Warranty	10 years
Assembly Information	Assembly required.
Product Codes	D6672P-1.ESP   D6672P-1.MAHO   D6672P-1.WHT   D6672P-1.SG   D6672P-1.WN

## NOTES

---



---



---



---



---