



KAI NON-HANDED RETURN SHELL, 20" X 40"

SKU: R2040

Kai laminate return that can be used left-handed or right-handed L-shaped desk configurations. This is the 20" depth x 40" width version.

Categories: [Bridges + Returns](#), [Components](#)

Tags: [Kai](#)

GALLERY IMAGES



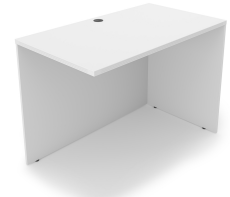
i5 Industries Kai Non-Handed Return Back – Samoa Gray – R2040, R2442, R2448



i5 Industries Kai Non-Handed Return – Walnut – R2040, R2442, R2448



i5 Industries Kai Non-Handed Return Back – Walnut – R2040, R2442, R2448



i5 Industries Kai Non-Handed Return – Matte White – R2040, R2442, R2448



i5 Industries Kai Non-Handed Return Back – Matte White – R2040, R2442, R2448



i5 Industries Kai Non-Handed Return – Mahogany – R2040, R2442, R2448



i5 Industries Kai Non-Handed Return Back – Mahogany – R2040, R2442, R2448



i5 Industries Kai Non-Handed Return – Espresso – R2040, R2442, R2448



PRODUCT FEATURES

- Fluted top edges
- Reversible - adjusts for left-handed or right-handed configurations
- 3mm edge banding
- Heavy duty construction
- Adjustable glides, up to 1"
- Commercial quality
- Sustainably sourced wood
- Imported from Europe
- Matching components available
- 10 year manufacturer's warranty
- Typically available for quick ship
- Weight Capacity: 150 lbs

PRODUCT DIMENSIONS

Depth	20.25"
Width	39.5"
Height	29"
Weight	59 lbs

PRODUCT INFORMATION

Material	Laminate
Certifications	ANSI/BIFMA, UL Greenguard Gold, TSCA Title IV, CARB 2
Warranty	10 years
Assembly Information	Assembly required.
Product Codes	R2040.ESP R2040.MAHO R2040.SG R2040.WHT R2040.WN

NOTES



[Kai Non-Handed Return Shell, 20" x 40"](https://i5industries.com/product/kai-line-non-handed-return-shell-20-x-40/)
<https://i5industries.com/product/kai-line-non-handed-return-shell-20-x-40/>

