



## **KAI U SHAPED BOW FRONT DESK WITH DOUBLE SUSPENDED PEDESTALS, 71" X 102"**

**SKU:** UBD71102P-1

Laminate workstation in a U configuration with bow front and four drawers. This desk is reversible and can be used as a left-handed or right-handed desk. This is the 71" depth x 102" width version.

**Categories:** [Desking](#), [U-Shaped Desks](#)

**Tags:** [Kai](#)

## **GALLERY IMAGES**



U Shaped Bow Front Desk with Suspended Pedestal – Walnut



U Shaped Bow Front Desk with Suspended Pedestal – Samoa Gray



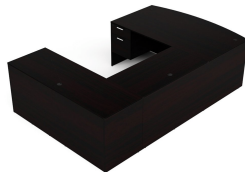
U Shaped Bow Front Desk with Suspended Pedestal – Mahogany



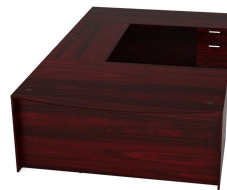
U Shaped Bow Front Desk with Suspended Pedestal – Espresso



U Shaped Bow Front Desk with Suspended Pedestal – Matte White



Kai Espresso Bow Front U-Shaped Desk with Suspended Ped



Kai Mahogany Bow Front U-Shaped Desk with Suspended Ped



## PRODUCT DESCRIPTION

Sustainably sourced laminate bow front desk in a U-configuration that is fully reversible and makes the perfect executive desk. Features two drawers on one side and two on the other, each pedestal is secured by a single lock and key. Ideal to be used as a workstation in a home office, private office, or open plan layout. Built for durability with a heavy-duty cam and dowel system and over-engineered with over 15 connection points. Available in five laminate finish options. **Custom keying options are available.**

## PRODUCT FEATURES

- Bow front design
- Storage pedestals arrive fully assembled
- Adjusts for left-handed or right-handed configurations
- 1" thick laminate top resists scratches, stains, and spills
- Lockable drawers with keys
- Adjustable leveling glides up to 1" to prevent wobbling
- Includes 2 file drawers and 2 box drawers
- Front-to-back filing in the filing drawers
- Grommets for cord maintenance and protection
- Heavy-duty cam and dowel system
- 15+ connection points
- 3mm edge banding
- Fluted top edges
- Commercial quality
- Sustainably sourced wood
- Imported from Europe
- Weight Capacity: 150 lbs

## PRODUCT DIMENSIONS

|                           |                             |
|---------------------------|-----------------------------|
| Overall Depth             | 71"                         |
| Overall Width             | 102"                        |
| Overall Height            | 29"                         |
| Overall Weight            | 386 lbs                     |
| Main Desk Dimensions      | 36" - 41" D x 71" W x 29" H |
| Bridge Dimensions         | 23.75" D x 42" W x 29" H    |
| Credenza Shell Dimensions | 23.75" D x 71" W x 29" H    |
| Pedestal Dimensions       | 22" D x 15.5" W x 20" H     |
| Pedestal Dimensions       | 22" D x 15.5" W x 20" H     |



[Kai U Shaped Bow Front Desk with Double Suspended Pedestals, 71" x 102"](https://i5industries.com/product/kai-u-shaped-bow-front-desk-with-double-suspended-pedestals-71-x-102/)

<https://i5industries.com/product/kai-u-shaped-bow-front-desk-with-double-suspended-pedestals-71-x-102/>



## COMPONENTS

|                 |   |
|-----------------|---|
| Main Desk Shell | <a href="#">Kai Bow Front Desk Shell, 36" x 71"</a> |
| Bridge Shell    | <a href="#">Kai Bridge Shell, 24" x 42"</a>         |
| Credenza Shell  | <a href="#">Kai Credenza Shell, 24" x 71"</a>       |
| Pedestal        | <a href="#">Kai Box/File Pedestal, 22"</a>          |
| Pedestal        | <a href="#">Kai Box/File Pedestal, 22"</a>          |

## PRODUCT INFORMATION

|                                |   |
|--------------------------------|---|
| Number of Grommets             | 5   |
| Number of Drawers              | 4   |
| Adjustable Leveling Glides     | 1"  |
| Shape                          | U Shape   |
| Edge Type                      | Fluted  |
| Main Desk Wood Grain Direction | Horizontal  |
| Return Wood Grain Direction    | Vertical  |
| Material                       | Laminate  |
| Certifications                 | ANSI/BIFMA, UL Greenguard Gold, TSCA Title IV, CARB 2                                     |
| Warranty                       | 10 years  |
| Assembly Information           | Assembly required.  |
| Product Codes                  | UBD71102P-1.ESP   UBD71102P-1.MAHO  <br>UBD71102P-1.WHT   UBD71102P-1.SG   UBD71102P-1.WN |

## NOTES

---



---



---



---



---