



KAI WALL MOUNTED HUTCH WITH 2 GLASS DOORS, 48"

SKU: WH48P-G2

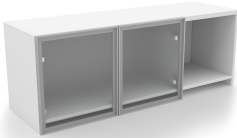
Kai Wall Mounted Hutch with 2 glass doors, 48" fixes to the wall with included mounting system. Available in 5 finishes.

Categories: [Hutches](#), [Storage](#)

Tags: [Kai](#)



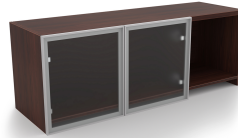
GALLERY IMAGES



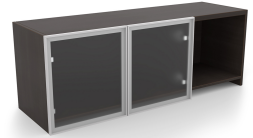
i5 Industries Kai Wall Mounted Hutch with 2 Glass Doors – Matte White – WH48P-G2



i5 Industries Kai Wall Mounted Hutch with 2 Glass Doors – Walnut – WH48P-G2



i5 Industries Kai Wall Mounted Hutch with 2 Glass Doors – Mahogany – WH48P-G2



i5 Industries Kai Wall Mounted Hutch with 2 Glass Doors – Espresso – WH48P-G2

PRODUCT FEATURES

- Mounting system included.
- 3mm edge banding
- Heavy duty construction
- Commercial quality
- Sustainably sourced wood
- Imported from Europe
- Matching components available
- 10 year manufacturer's warranty
- Typically available for quick ship



- Weight Capacity: 75 lbs

PRODUCT DIMENSIONS

Depth	14.25"
Width	47.5"
Height	17"
Weight	66 lbs

PRODUCT INFORMATION

Material	Laminate
Certifications	ANSI/BIFMA, UL Greenguard Gold, TSCA Title IV, CARB 2
Warranty	10 years
Assembly Information	Assembly required.
Product Codes	WH48P-G2.ESP WH48P-G2.MAHO WH48P-G2.SG WH48P-G2.WHT WH48P-G2.WN

NOTES
