



RAYNE PENCIL DRAWER, 22"

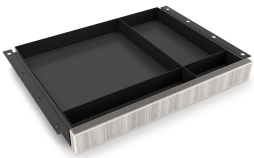
SKU: RN-PD22

Rayne Pencil Drawer with 4 Compartments compatible with Rectangular Desks and Credenzas.

Categories: [Storage](#), [Under Desk Storage](#)

Tags: [Rayne](#)

GALLERY IMAGES



i5 Industries Rayne Pencil Drawer – Harbor Elm – RN-PD22

PRODUCT FEATURES

- 4 Compartments
- Simple assembly - attaching the drawer face
- Commercial quality
- Sustainably sourced wood
- Imported from Europe
- Weight Capacity: 75 lbs

PRODUCT DIMENSIONS

Depth	16.5"
Width	22.5"
Height	20"



[Rayne Pencil Drawer, 22"](https://i5industries.com/product/rayne-pencil-drawer-22/)

<https://i5industries.com/product/rayne-pencil-drawer-22/>



Weight

6 lbs

PRODUCT INFORMATION

Material

Laminate

Certifications

ANSI/BIFMA, UL Greenguard Gold, TSCA Title IV, CARB 2

Warranty

10 years

Assembly Information

No assembly required.

Product Codes

RN-PD22.CDN | RN-PD22.HEM

NOTES
