

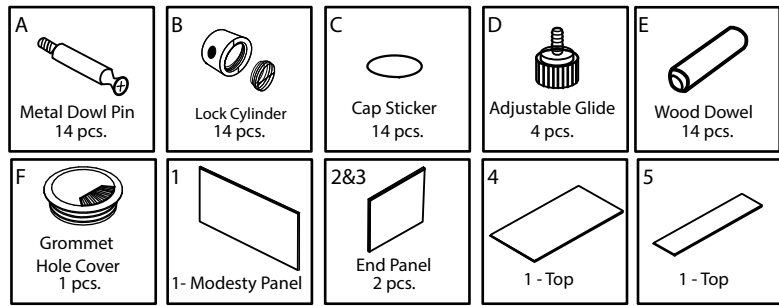
MODEL# KD-STC3648, KD-STC4248

36 x 48 SINGLE STUDY CARREL

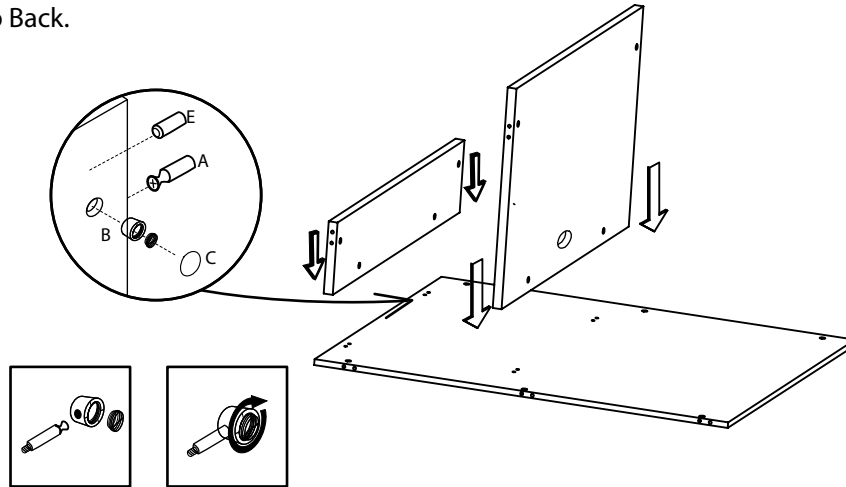
42 x 48 SINGLE STUDY CARREL

ASSEMBLY INSTRUCTIONS

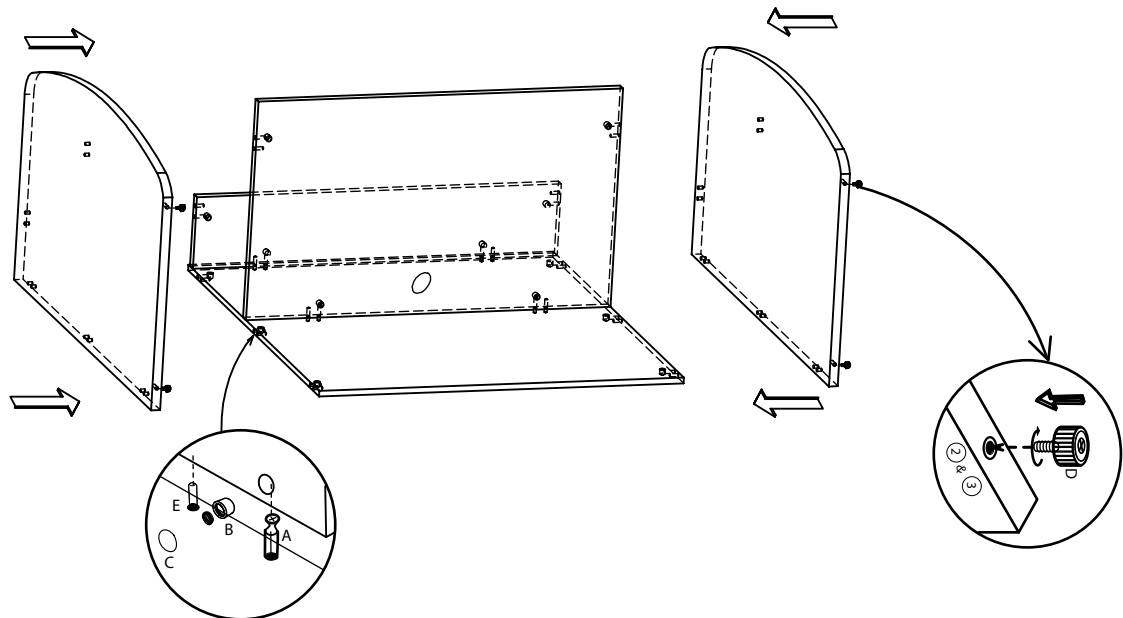
Kai
By
i5 Industries



Step 1:
Assemble Tops to Back.



Step 2:
Place end panels on assembled (Back with Tops) as shown.



Note:

- Place all laminated parts on a clean and smooth surface such as a rug or carpet to avoid the parts from being scratched.
- Check to be sure that you have all parts and hardware.
- Remove all wrapping materials, including staples & packing straps before you start to assemble.
- Line up holes for cam locks.
- Put on sticker caps last.
- Keep all hardware parts out of reach of children.